

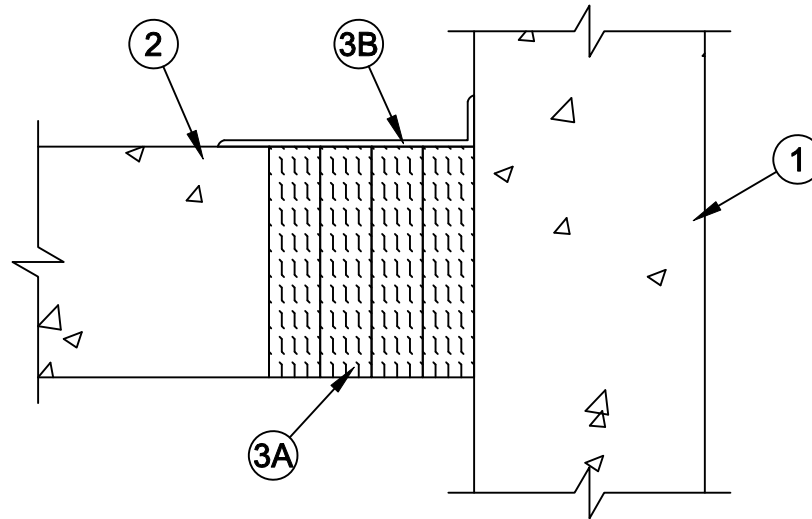


System No. FW-D-1035

Assembly Rating - 3 Hr
Nominal Joint Width- 4 In.

L Rating At Ambient - Less Than 1 CFM/Lin Ft
L Rating At 400°F - Less Than 1 CFM/Lin Ft

Class II Movement Capabilities-25% Compression or Extension



1. **Wall Assembly** - Min 4-1/2 in. (114 mm) thick lightweight or normal weight reinforced (100-150 pcf or 1600-2400 kg/m³) structural concrete. Wall may also be constructed of any UL Classified **Concrete Blocks***. See **Concrete Blocks** (CAZT) category in the Fire Resistance Directory for names of manufacturers.
 2. **Floor Assembly** - Min 4-1/2 in. (114 mm) thick reinforced lightweight or normal weight (100-150 pcf or 1600-2400 kg/m³) structural concrete.
 3. **Joint System** - **Max width of joint (at time of installation of joint system) is 4 in. (102 mm). The joint system is designed to accommodate a max 25 percent compression or extension from its installed width.** The joint system shall consist of forming and fill materials, as follows:
 - A. **Forming Material*** - Min 4 pcf (64 kg/m³) mineral wool batt insulation installed in joint opening as a permanent form. Pieces of batt cut to min 4-1/2 in. (114 mm) width and installed edge-first into joint opening, parallel with joint direction, such that batt sections are compressed min 50 percent in thickness and such that the compressed batt sections are flush with the top surface of the floor. Adjoining lengths of batt to be tightly butted with butted seams spaced min 16 in. (406 mm) apart along the length of the joint.
 - IIG MINWOOL L L C** - MinWool-1200 Safing
 - ROCK WOOL MANUFACTURING CO** - Delta Safing Board
 - ROCKWOOL MALAYSIA SDN BHD** - SAFE
 - ROXUL INC** - SAFE
 - THERMAFIBER INC** - Type SAF
 - B. **Fill, Void or Cavity Material* - Sealant** - Min 1/8 in. (3.2 mm) wet thickness or 1/16 in. (1.6 mm) dry thickness of fill material applied to cover the top surface of the mineral wool batt forming material and to lap min 1/2 in. (13 mm) onto the concrete on each side of the joint opening.
 - SPECIFIED TECHNOLOGIES INC** - SpecSeal AS200 Elastomeric Spray
- * Indicates such products shall bear the UL or cUL Certification Mark for jurisdictions employing the UL or cUL Certification (such as Canada), respectively.



Specified Technologies Inc. 210 Evans Way Somerville, NJ 08876

Reproduced courtesy of Underwriters Laboratories, Inc.
Created or Revised: February 28, 2014

(800)992-1180 • (908)526-8000 • FAX (908)231-8415 • E-Mail:techserv@stifirestop.com • Website:www.stifirestop.com



FW-D-1035
PAGE 1 OF 1