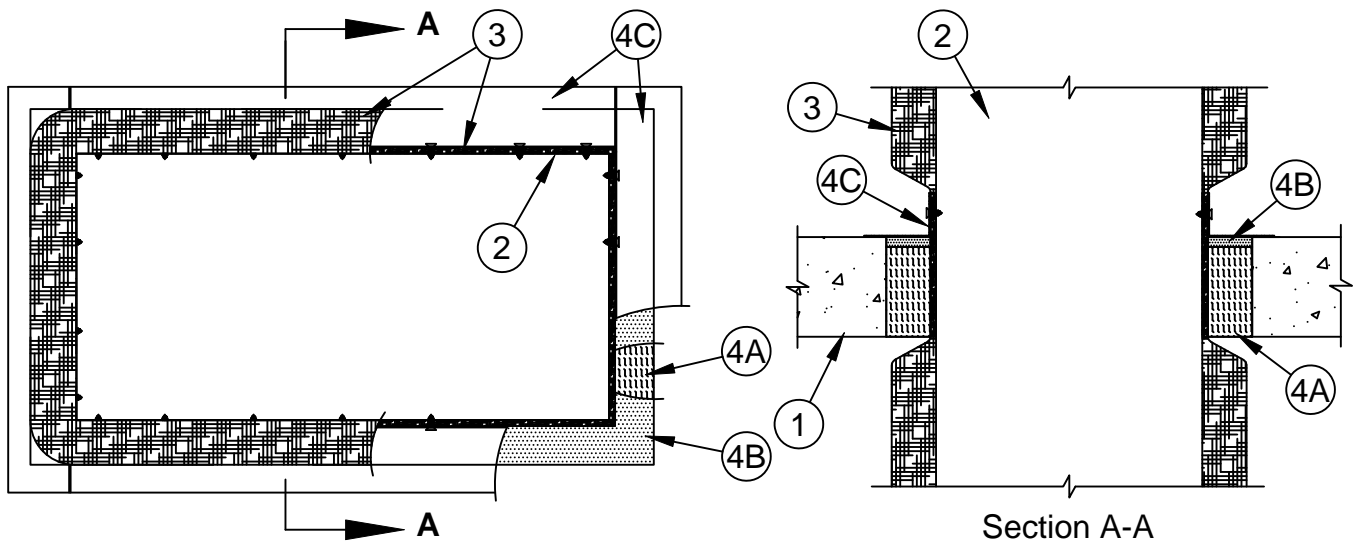


System No. C-AJ-7143



ANSI/UL1479 (ASTM E814)	CAN/ULC S115
F Rating - 2 Hr	F Rating - 2 Hr
T Rating - 3/4 Hr	FT Rating - 3/4 Hr
L Rating At Ambient - Less Than 1 CFM/sq ft	FH Rating - 2 Hr
L Rating At 400 F - Less Than 1 CFM/sq ft	FTH Rating - 3/4 Hr
	L Rating At Ambient - Less Than 1 CFM/sq ft
	L Rating At 400 F - Less Than 1 CFM/sq ft



- Floor or Wall Assembly** - Min 4-1/2 in. (114 mm) thick reinforced lightweight or normal weight (100-150 pcf or 1600-2400 kg/m³) concrete. Wall may also be constructed of any UL Classified **Concrete Blocks***. Max area of opening is 17.8 ft² (1.65 m²) with max dimension of 64 in. (1.6 m).
See **Concrete Blocks** (CAZT) category in the Fire Resistance Directory for names of manufacturers.
- Steel Duct** - Max 60 by 36 in. (1524 by 914 mm) steel duct. Steel gauge of duct shall conform with SMACNA requirements. One duct to be centered within the firestop system. The annular space between steel duct and edges of opening shall be min 2 in. (51 mm) to max 2-1/2 in. (64 mm) Steel duct to be rigidly supported on both sides of floor or wall assembly.
- Batts and Blankets*** - Nom 2 in. (51 mm) thick light density (min 3/4 pcf or 12 kg/m³) glass fiber blanket insulation jacketed on the outside with a foil-scrim-kraft facing. Longitudinal and transverse joints sealed with foil-scrim-kraft tape. Nom annular space between insulated steel duct and periphery of opening to be point contact to max 1/2 in. (13 mm) prior to installation of packing material (Item 4A).
See **Batts and Blankets** (BKNV) category in the Building Materials Directory for names of manufacturers. Any batt or blanket meeting the above specifications and bearing the UL Classification Marking with a Flame Spread value of 25 or less and a Smoke Developed value of 50 or less may be used.



Specified Technologies Inc. 210 Evans Way Somerville, NJ 08876

Reproduced courtesy of Underwriters Laboratories, Inc.
Created or Revised: January 23, 2014

(800)992-1180 • (908)526-8000 • FAX (908)231-8415 • E-Mail:techserv@stifirestop.com • Website:www.stifirestop.com



C-AJ-7143
PAGE 1 OF 2

4. **Firestop System** - The firestop system shall consist of the following:

- A. **Packing Material** - Min 4 in. (102 mm) thickness of min 4 pcf (64 kg/m³) mineral wool batt insulation firmly packed into annular space such that glass fiber blanket insulation on steel duct is compressed to a maximum overall thickness of 1/2 in. (13 mm). Packing material to be recessed from top surface of floor and from both surfaces of wall to accommodate the required thickness of fill material.
- B. **Fill, Void or Cavity Material* - Sealant** - Min 1/2 in. (13 mm) thickness of fill material applied within the annulus, flush with top surface of floor and both surfaces of wall.

SPECIFIED TECHNOLOGIES INC - SpecSeal Series SSS Sealant, SpecSeal LCI Sealant, Pensil 300 Sealant or SpecSeal Series SIL300 Sealant for floors or walls and Pensil 300SL Sealant or SpecSeal Series SIL300SL Sealant for floors only.

- C. **Retaining Angles** - Min 16 ga galv steel angles sized to lap duct a min of 2 in. (51 mm) and lap periphery of opening a min of 1 in. (25 mm). Angles attached to all four sides of steel duct, through glass fiber blanket insulation, on top surface of floor or on both surfaces of wall with No. 10 (or larger) steel sheet metal screws spaced 1 in. (25 mm) from each end and max 4 in. (102 mm) OC.

* Indicates such products shall bear the UL or cUL Certification Mark for jurisdictions employing the UL or cUL Certification (such as Canada), respectively.



Specified Technologies Inc. 210 Evans Way Somerville, NJ 08876

Reproduced courtesy of Underwriters Laboratories, Inc.

Created or Revised: January 23, 2014

(800)992-1180 • (908)526-8000 • FAX (908)231-8415 • E-Mail:techserv@stifirestop.com • Website:www.stifirestop.com



C-AJ-7143
PAGE 2 OF 2