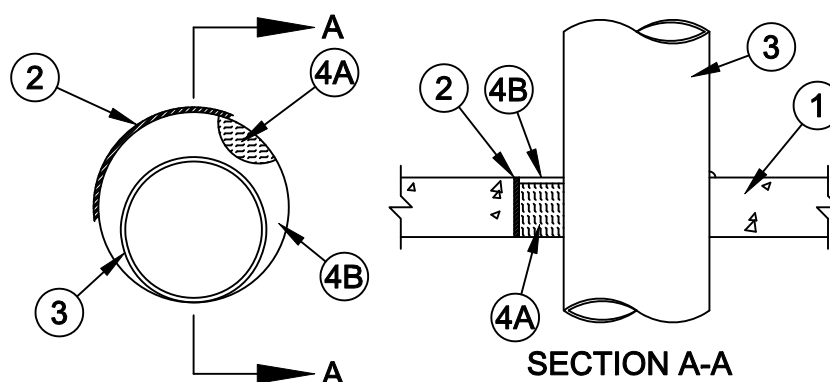


System No. C-AJ-1240



ANSI/UL1479 (ASTM E814)	CAN/ULC S115
F Ratings - 2 and 3 Hr (See Item 4)	F Ratings - 2 and 3 Hr (See Item 4)
T Rating - 0 Hr	FT Rating - 0 Hr
L Rating At Ambient - Less Than 1 CFM/sq ft	FH Ratings - 2 and 3 Hr (See Item 4)
L Rating At 400 F - Less Than 1 CFM/sq ft	FTH Rating - 0 Hr
W Rating - Class 1 (See Item 4B)	L Rating At Ambient - Less Than 1 CFM/sq ft
	L Rating At 400 F - Less Than 1 CFM/sq ft



1. **Floor or Wall Assembly** - Min 2-1/2 in. (64 mm) thick reinforced lightweight or normal weight (100-150 pcf or 1600-2400 kg/m³) concrete floor or 2-3/4 in. (70 mm) lightweight or normal weight concrete wall. Wall may also be constructed of any UL Classified **Concrete Blocks***. Floor may also be constructed of any UL Classified **Precast Concrete Units***. Max diam of opening is 32 in. (813 mm). Max diam of opening in floors constructed of hollow-core precast concrete units is 7 in. (178 mm). See **Concrete Blocks** (CAZT) and **Precast Concrete Units** (CFTV) categories in the Fire Resistance Directory for names of manufacturers.
2. **Steel Sleeve** - (Optional) - Nom 32 in. (813 mm) diam (or smaller) Schedule 10 (or heavier) steel pipe sleeve or No. 26 ga (0.022 in. or 0.56 mm thick) sheet steel sleeve with square anchor flange spot welded to the sleeve at approx mid-height. Sleeve cast or grouted in place flush with floor or wall surfaces. Steel pipe sleeve may project max 3 in. (76 mm) from floor or wall surfaces.
3. **Through Penetrant** - One metallic pipe, conduit or tubing to be installed either concentrically or eccentrically within the firestop system. The annular space between pipe, conduit or tubing and periphery of opening shall be min 0 in. (point contact) to max 2 in. (51 mm). Pipe, conduit or tubing to be rigidly supported on both sides of floor or wall assembly. The following types and sizes of metallic pipes, conduits or tubing may be used:
 - A. **Steel Pipe** - Nom 30 in. (762 mm) diam (or smaller) Schedule 10 (or heavier) steel pipe.
 - B. **Iron Pipe** - Nom 30 in. (762 mm) diam (or smaller) cast or ductile iron pipe.
 - C. **Conduit** - Nom 4 in. (102 mm) diam (or smaller) steel electrical metallic tubing or nom 6 in. (152 mm) diam steel conduit.
 - D. **Copper Tubing** - Nom 6 in. (152 mm) diam (or smaller) Type M (or heavier) copper tubing.
 - E. **Copper Pipe** - Nom 6 in. (152 mm) diam (or smaller) Regular (or heavier) copper pipe.



Specified Technologies Inc. 210 Evans Way Somerville, NJ 08876

Reproduced courtesy of Underwriters Laboratories, Inc.

Created or Revised: August 15, 2014

(800)992-1180 • (908)526-8000 • FAX (908)231-8415 • E-Mail:techserv@stifirestop.com • Website:www.stifirestop.com



C-AJ-1240
PAGE 1 OF 2

- 3A. **Through Penetrating Product* Flexible Metal Piping** - As an alternate to Item 3, one nom 2 in. (51 mm) diam (or smaller) flexible steel pipe to be installed either concentrically or eccentrically within the firestop system. The annular space between the pipe and the periphery of the opening shall be min 0 in. (point contact) to max 2 in. (51 mm). Pipe to be rigidly supported on both sides of floor or wall assembly.

OMEGA FLEX INC

GASTITE, DIV OF TITFLEX

WARD MFG L L C

4. **Firestop System** - The firestop system shall consist of the following:

- A. **Packing Material** - Min 2-1/4 in. (57 mm) thickness of min 4 pcf (64 kg/m³) mineral wool batt insulation firmly packed into opening as a permanent form. Packing material to be recessed from top surface of floor or from both surfaces of wall as required to accommodate the required thickness of fill material.
- B. **Fill, Void or Cavity Material* - Sealant** - Min 1/4 in. (6 mm) thickness of fill material applied within the annulus, flush with top surface of floor or top of sleeve or with both surfaces of wall assembly or both ends of sleeve. At the point contact location between through penetrant and concrete, a min 1/4 in. (6 mm) diam bead of fill material shall be applied at the concrete/through penetrant interface on the top surface of floor and on both surfaces of wall. Fill material installed symmetrically in floors constructed of hollow-core precast concrete units.

SPECIFIED TECHNOLOGIES INC - SpecSeal Series SSS Sealant or SpecSeal LCI Sealant. SpecSeal LC 150 Sealant, SpecSeal LE600 Sealant, SpecSeal Series SIL300 Sealant or SpecSeal Series SIL300SL Sealant may be used for 2 hr F Rating only. SpecSeal Series SIL300SL Sealant to be used for floors only.

W Rating applies only when SpecSeal Series SIL300 or SpecSeal Series SIL300SL are used.

* Indicates such products shall bear the UL or cUL Certification Mark for jurisdictions employing the UL or cUL Certification (such as Canada), respectively.



Specified Technologies Inc. 210 Evans Way Somerville, NJ 08876

Reproduced courtesy of Underwriters Laboratories, Inc.

Created or Revised: August 15, 2014

(800)992-1180 • (908)526-8000 • FAX (908)231-8415 • E-Mail:techserv@stifirestop.com • Website:www.stifirestop.com



C-AJ-1240
PAGE 2 OF 2